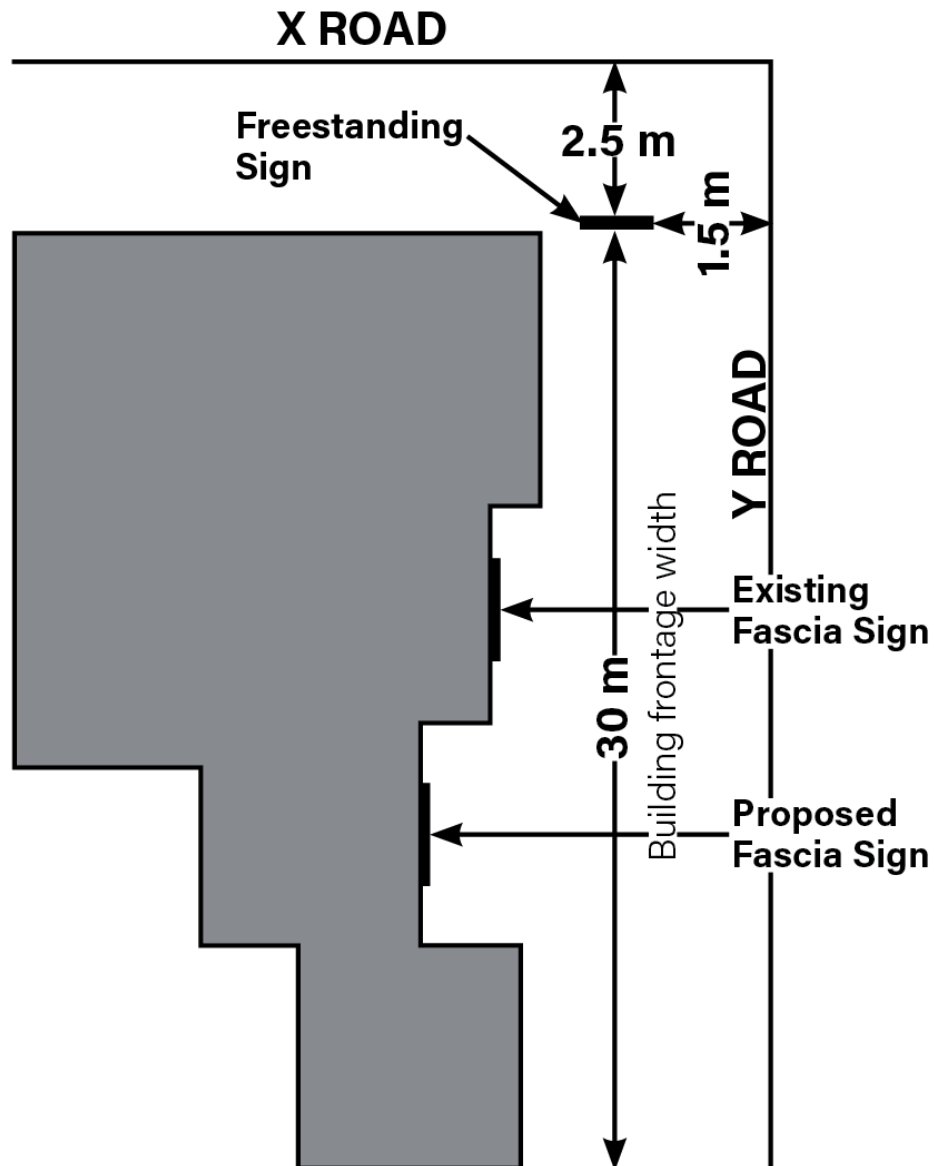
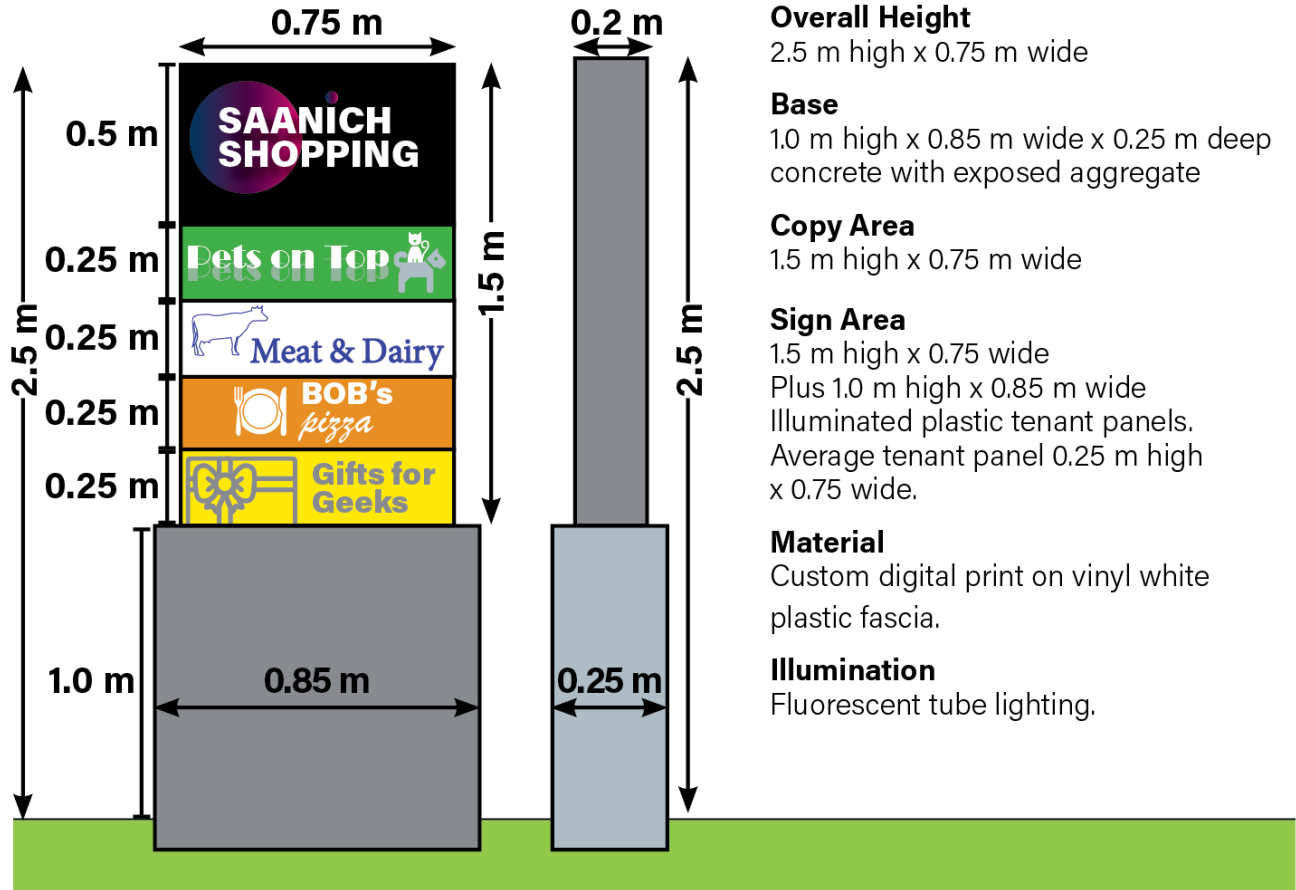


## Example Scenarios of Permissible Sign Standards

### Example 1 Top View showing Existing & Proposed Sign Locations



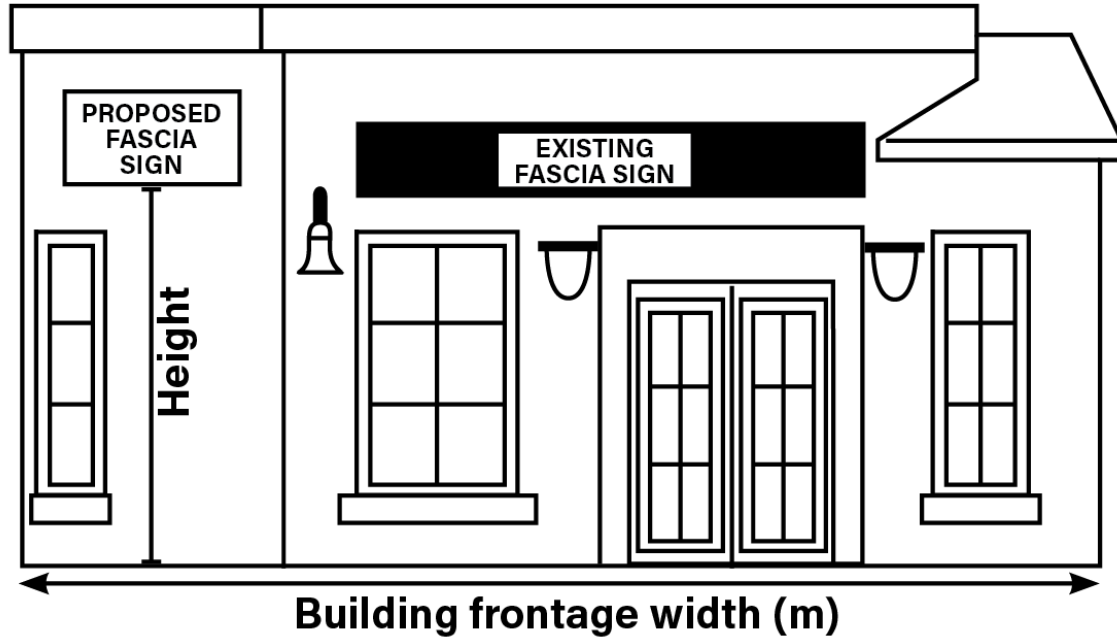
## Example 2 Freestanding Sign



**Copy Area** for a **Freestanding Sign** means only the portion of a sign devoted to advertising and excludes framing, trim, or supporting structures.

**\*Sign Area** for a **Freestanding Sign** means the entire face of a sign including any copy area, framing, trim, moulding or supporting structure.

**Example 3**  
**Drawing of Building showing Existing**  
**& Proposed Sign Locations**



**Example 4**  
**Fascia Sign**

**Copy Area** means the entire face of a sign including the advertising surface and framing, trim, or moulding but not including the supporting structures.

